

Pandar128

128-Channel
Image-Like Resolution
High-Performance LiDAR

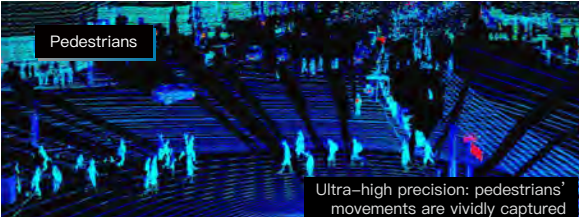
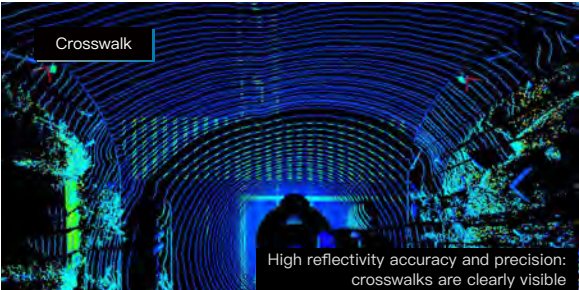
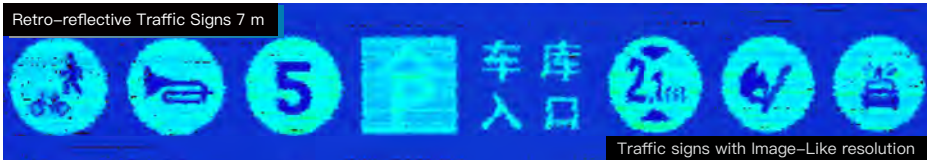
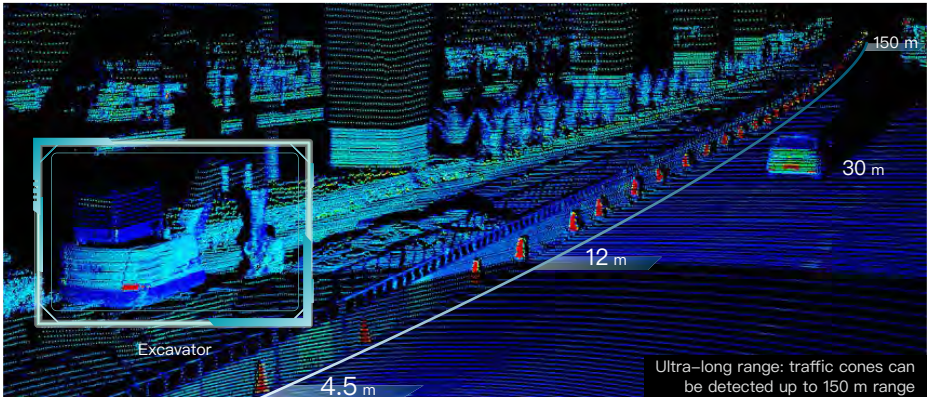
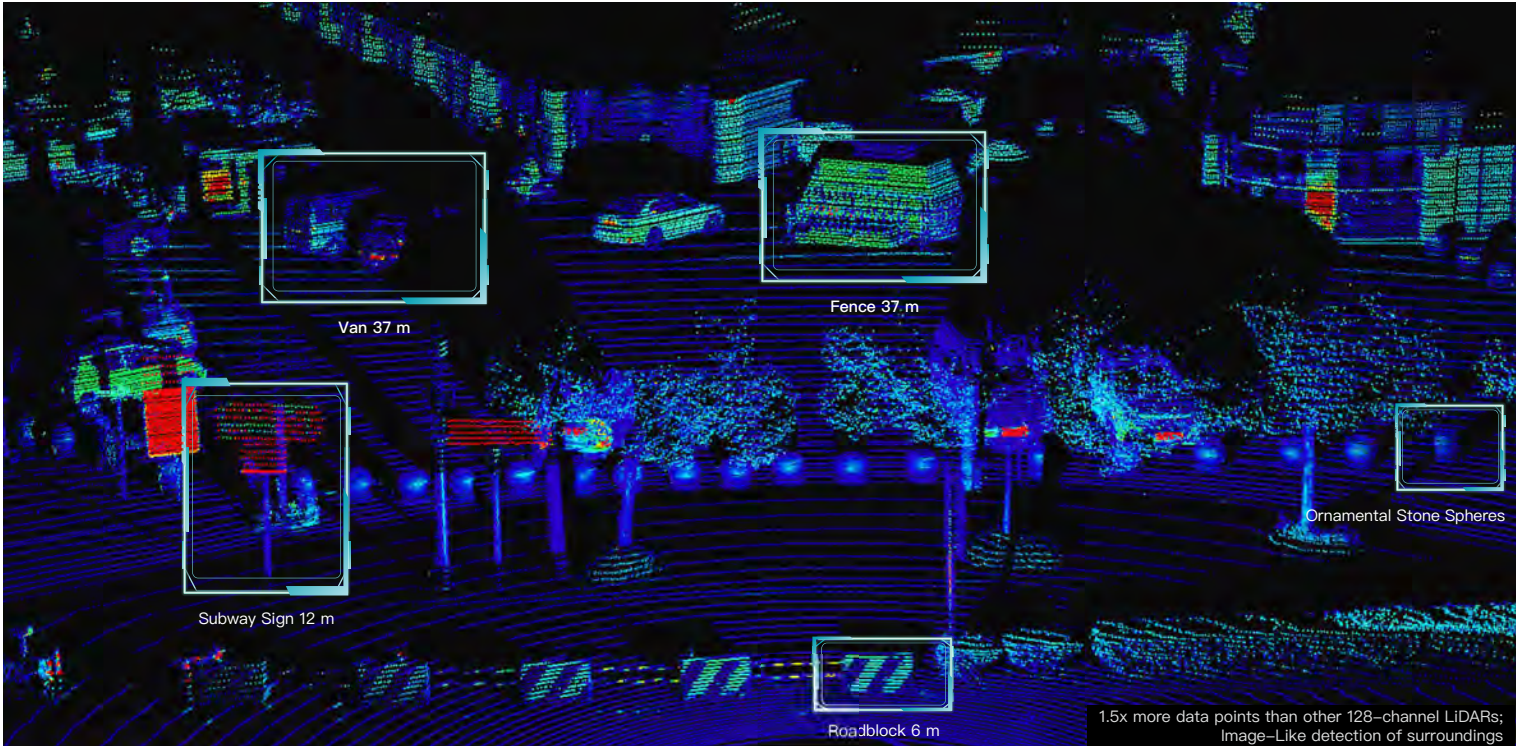


MAP IV, Inc.

✉ contact@map4.jp

🌐 www.map4.jp

Pandar128 Point Cloud



Pandar128

Key Specifications

<div>0.3 m ~ 200 m</div> <div>(at 10% reflectivity)</div> <div>Measurement Range</div>	<div><div>±5 cm</div><div>(0.3 ~ 1 m)</div></div> <div><div>±2 cm</div><div>(1 ~ 200 m)</div></div> <div>Range Accuracy</div>
<div>0.1°</div> <div>(10 Hz)</div> <div>0.2°</div> <div>(20 Hz)</div> <div>Horizontal Resolution</div>	<div>40°</div> <div>(-25° ~ +15°)</div> <div>Vertical FOV</div>
<div>Minimum</div> <div>0.125°</div> <div>(-6° ~ +2°)</div> <div>Vertical Resolution</div>	<div>Single Return:</div> <div>3,456,000</div> <div>points/sec</div> <div>Dual Return:</div> <div>6,912,000</div> <div>points/sec</div> <div>Data Points Generated</div>
<div>DC 9 V ~ 48 V</div> <div>Operating Voltage</div>	<div>27 W</div> <div>(at 0.1° horizontal resolution)</div> <div>20 W</div> <div>(at 0.2° horizontal resolution)</div> <div>Power Consumption</div>
<div>-40°C ~ 85°C</div> <div>Operating Temperature</div>	<div>Hight:</div> <div>123.7 mm</div> <div>Diameter:</div> <div>118.0 mm</div> <div>(Top, Bottom)</div> <div>116.0 mm</div> <div>Weight:</div> <div>1.63 kg</div> <div>Dimensions and Weight</div>

Pandar128

Product Superiority

<div></div> <div>Pandar128 is a high-performance multi-beam LiDAR product highly integrated with Hesai's new breakthrough technologies</div>	<div></div> <div>Ultra-long-range</div> <div>The measurement range for objects with 10% reflectivity under 100 klux ambient light exceeds 200 m, while keeping the noise rate below 10⁻⁵</div>	<div></div> <div>High range accuracy and precision</div> <div>0.3 ~ 1 m: ±5 cm, 1 ~ 200 m: up to ±2 cm, RMSE <2 cm</div>	<div></div> <div>Ultra-high resolution</div> <div>Up to 0.1° (H) * 0.125° (V) resolution at 10 Hz high-performance mode</div>
<div></div> <div>Interference Rejection</div> <div>Every pulse has its own 'fingerprint'</div>	<div></div> <div>Higher protection grade</div> <div>IP6K9K & IP6K7</div>	<div></div> <div>Data transmission</div> <div>Automotive ethernet and ordinary ethernet both available</div>	<div></div> <div>Supports gPTP protocol</div> <div>Microsecond-level precision synchronization</div>

Pandar128

Applications

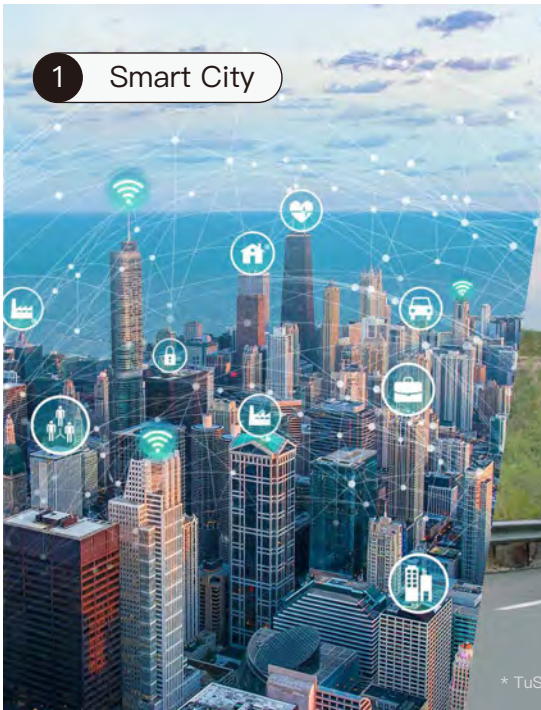
1 Smart City

2 Truck Logistics

3 Autonomous Shuttle

4 Robotaxi

5 HD Mapping



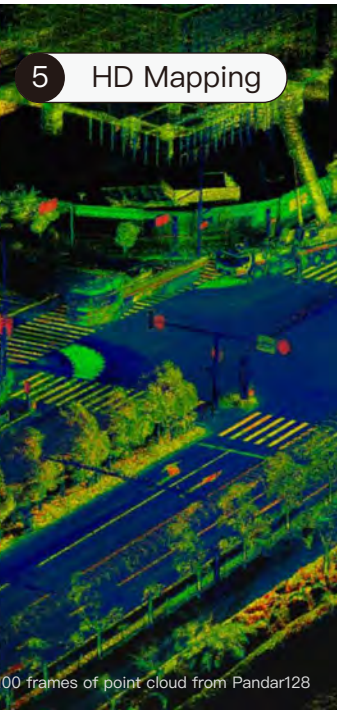
* TuSimple Autonomous Truck







* WeRide Robotaxi Fleet



* Stitching 100 frames of point cloud from Pandar128